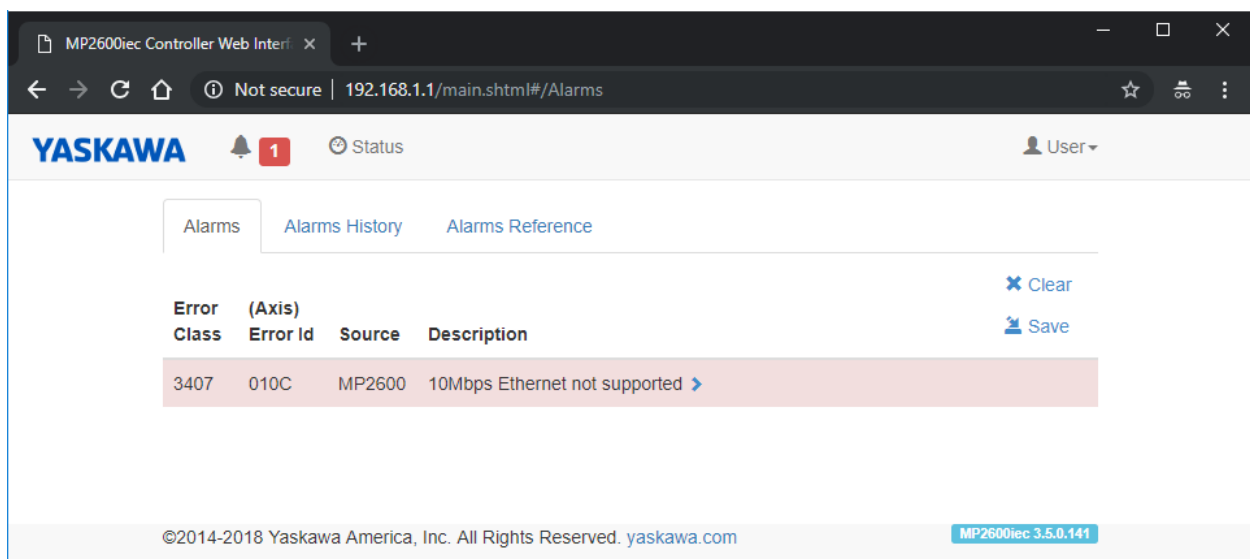


Title: Why does an MP2600iec get alarm 3407 010C “10Mbps Ethernet not supported” after it is power cycled?

Product(s): MP2600iec, MotionWorks IEC

Doc. No. CNT-28DF3B

When an MP2600iec drops the Ethernet connection to a PC due to a power cycle, some PC's set their Ethernet connection to 10mbps. When the MP2600iec re-establishes the Ethernet connection, it detects the 10mbps connection and it creates an alarm because the MP2600iec does not support 10mbps connections. After this alarm occurs, the PC cannot communicate to the MP2600iec.



To avoid this alarm, always use an Ethernet switch or hub when connecting a PC to an MP2600iec.

If using an Ethernet switch or hub is not an option, the connection can be recovered by unplugging the Ethernet cable and then plugging it back in. The network setting can also be changed to avoid this issue.

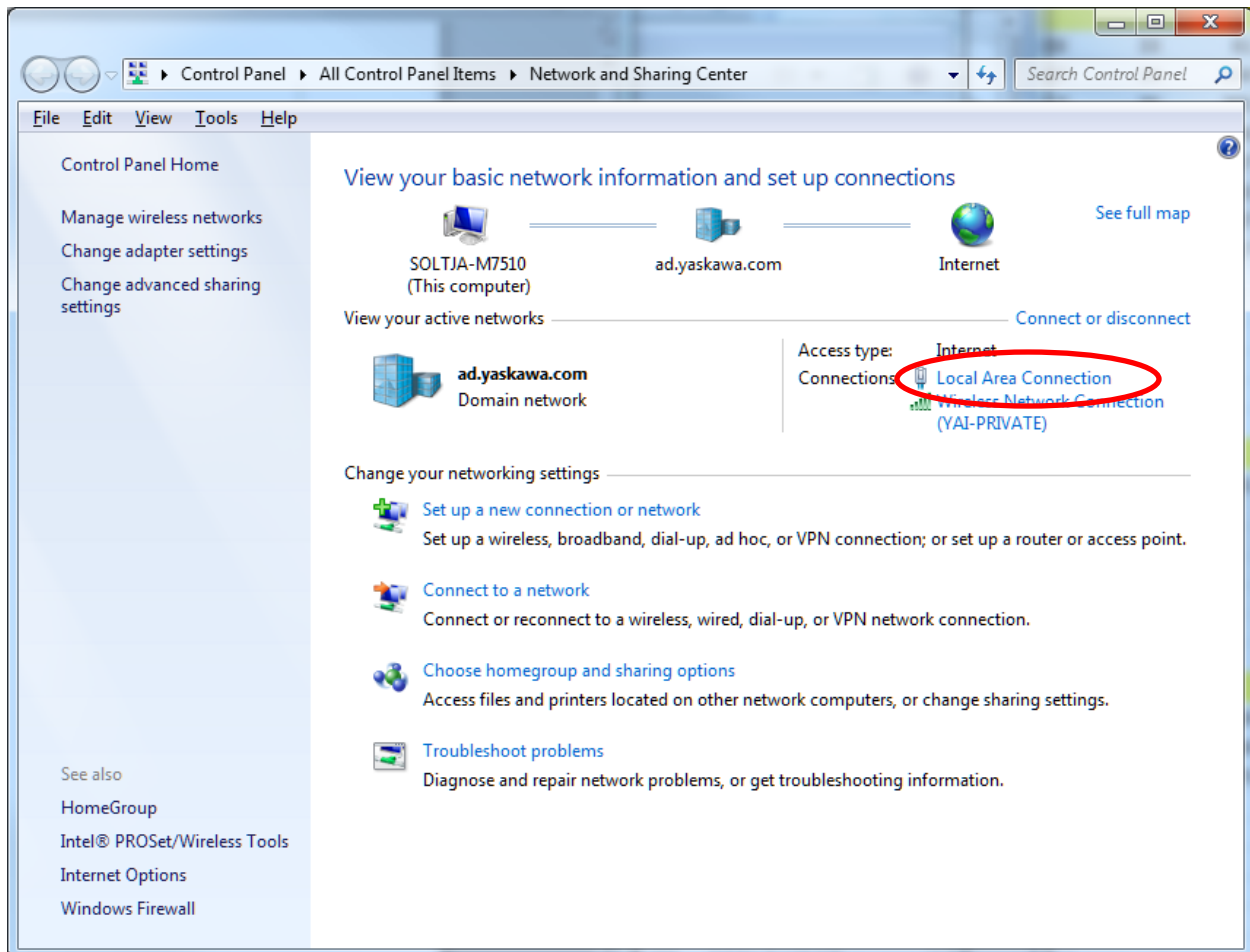
To change the network setting open “Network and Sharing Center”.

Title: Why does an MP2600iec get alarm 3407 010C “10Mbps Ethernet not supported” after it is power cycled?

Product(s): MP2600iec, MotionWorks IEC

Doc. No. CNT-28DF3B

In Windows 7 select Local Area Connection:

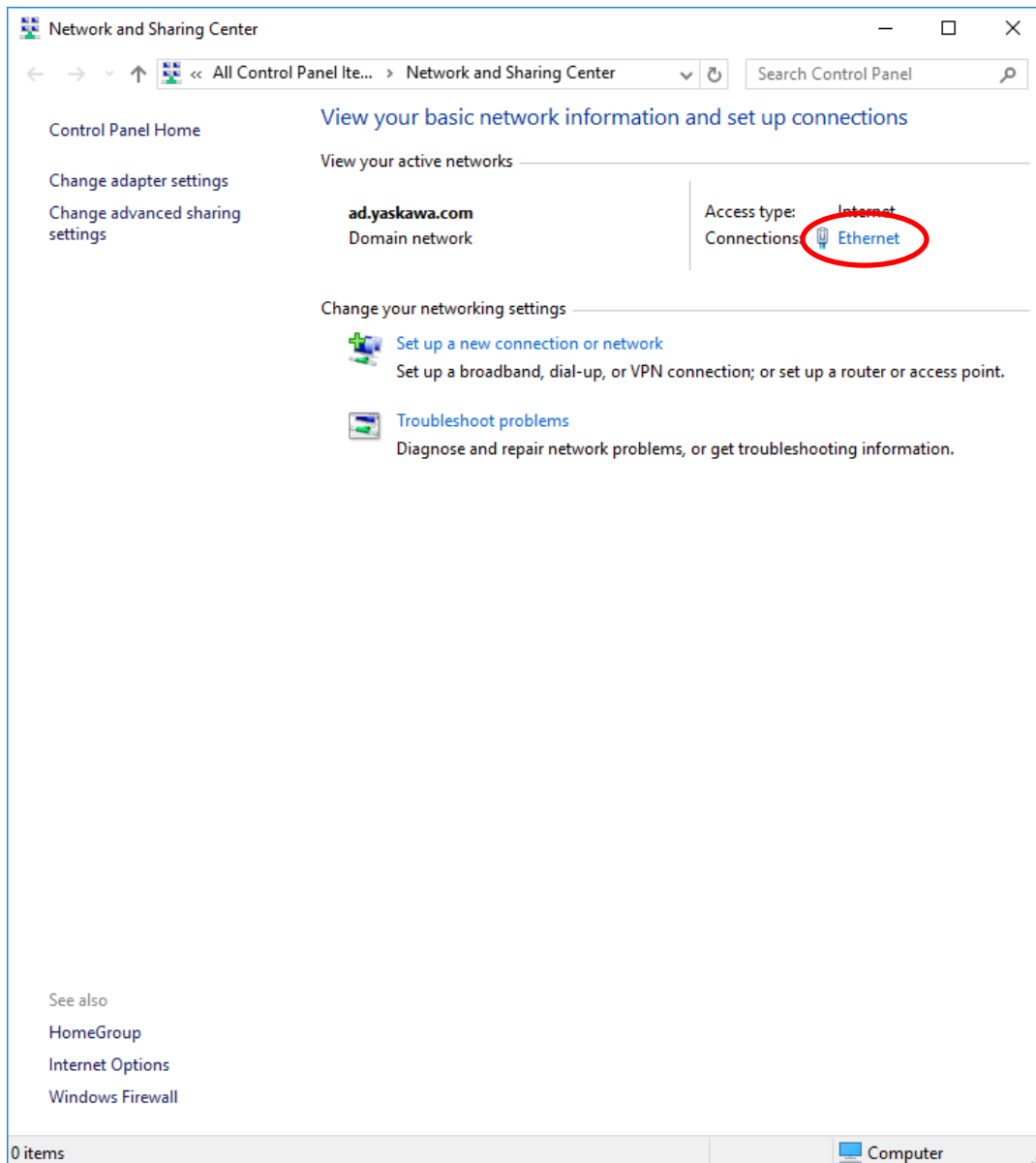


Title: Why does an MP2600iec get alarm 3407 010C “10Mbps Ethernet not supported” after it is power cycled?

Product(s): MP2600iec, MotionWorks IEC

Doc. No. CNT-28DF3B

In Windows 10 select Ethernet:

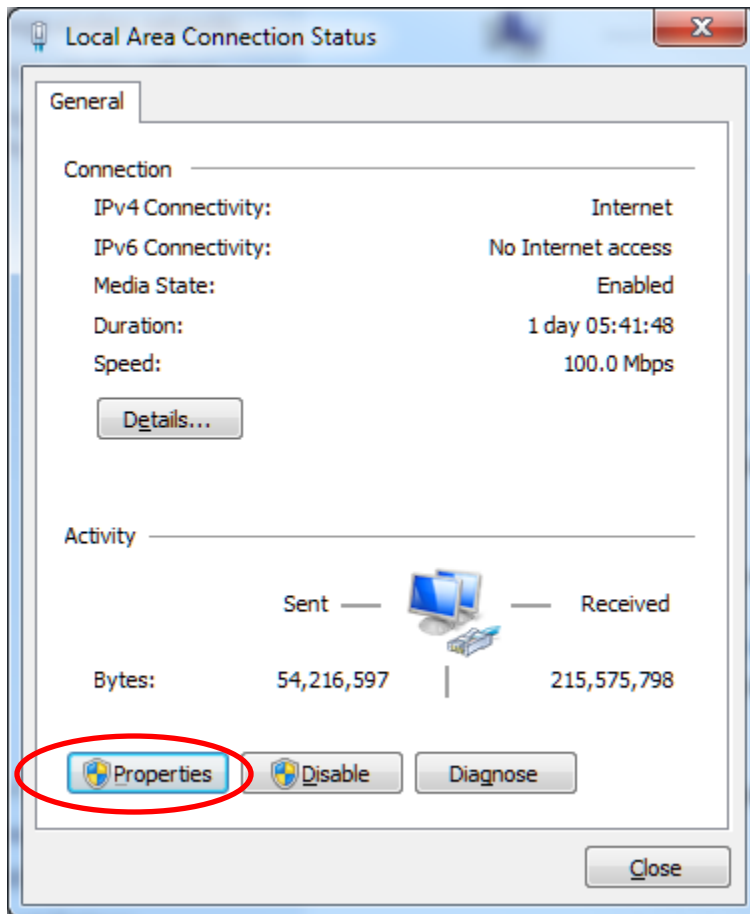


Title: Why does an MP2600iec get alarm 3407 010C “10Mbps Ethernet not supported” after it is power cycled?

Product(s): MP2600iec, MotionWorks IEC

Doc. No. CNT-28DF3B

In the status dialog select Properties.

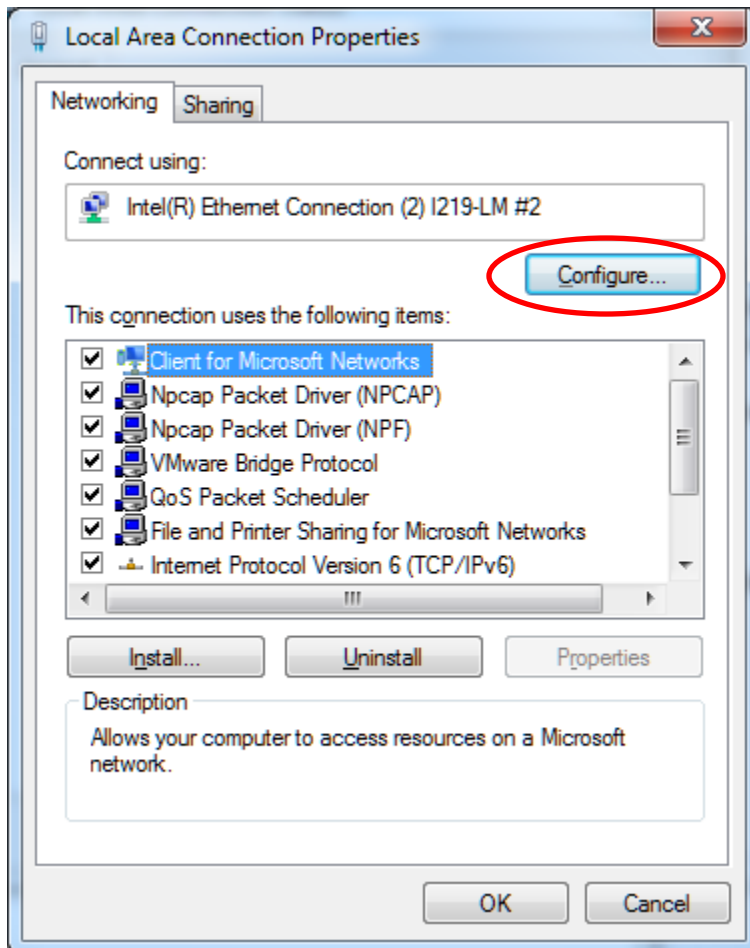


Title: Why does an MP2600iec get alarm 3407 010C “10Mbps Ethernet not supported” after it is power cycled?

Product(s): MP2600iec, MotionWorks IEC

Doc. No. CNT-28DF3B

In the Properties dialog select Configure:

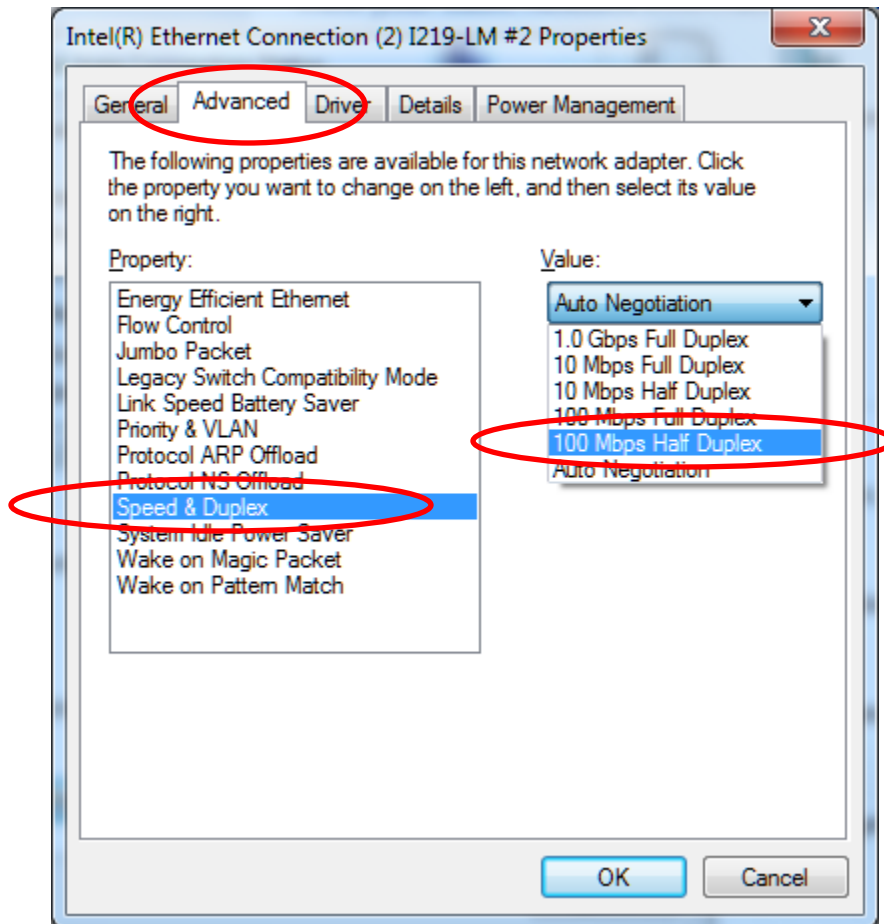


Title: Why does an MP2600iec get alarm 3407 010C “10Mbps Ethernet not supported” after it is power cycled?

Product(s): MP2600iec, MotionWorks IEC

Doc. No. CNT-28DF3B

Select the Advanced tab, select the “Speed & Duplex” property and set the value to 100Mbps Full Duplex:



Click OK/Close to close the dialogs