
Appendix C USB Driver Installation

This section describes how to install the USB driver software for SERVOPACK.

The SERVOPACK USB driver cannot be installed by using the SigmaWin+ installer.

When a SigmaWin+ equipped PC is connected to the SERVOPACK through a USB connection, use the following procedure to install the USB driver.

The installation method will vary depending on the operating system (hereinafter referred to as OS). Use the correct procedure for your OS.

The installation procedure is explained assuming that the SigmaWin+ installed folder directory is "C:\Program Files\SigmaIDE" and that the CD-ROM drive is D drive. Use the folder directory and drive according to the settings of your PC.

C.1 Installing the Driver

- For Windows 7/Vista
- For Windows XP
- For Windows 2000

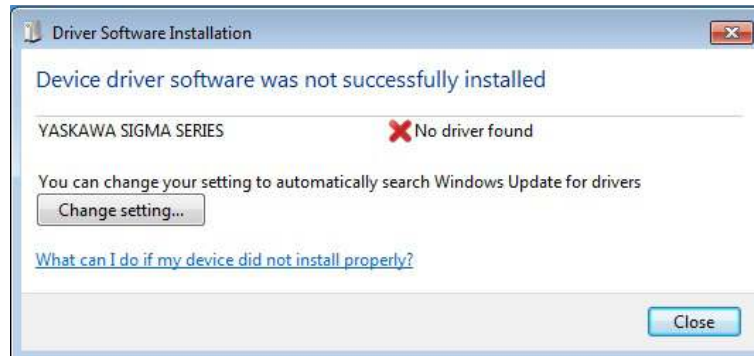
C.2 Confirming the Installation Status

C.3 Removing a USB Device

C.1 Installing the Driver

■ For Windows 7/Vista

1. Turn on the power to the PC to start Windows 7 or Vista.
2. Confirm that SigmaWin+ has been installed. If it has not yet been installed, follow the procedures described in "1.4 Installing SigmaWin+ Program".
3. Connect the SERVOPACK to the PC using a USB cable, and then turn on the power to the SERVOPACK. The following message will appear.



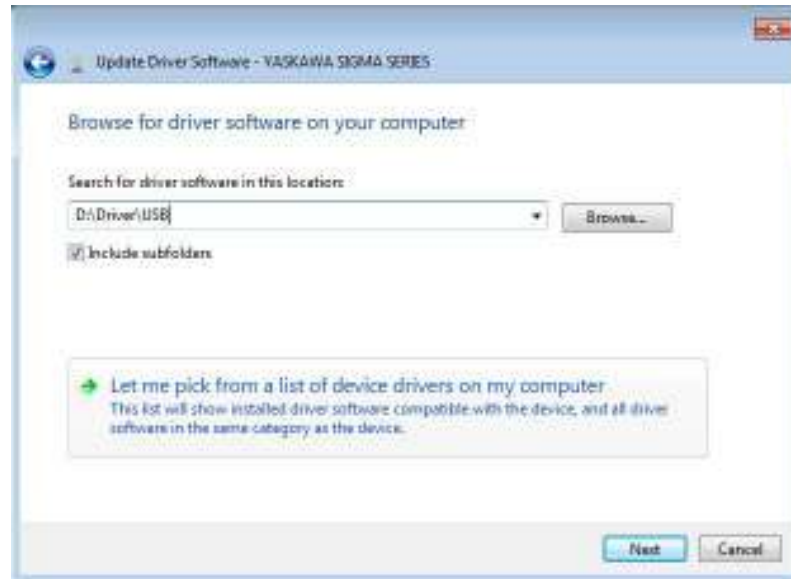
4. Click **Close**.
5. On the **Start** menu, right-click **Computer** and select **Properties**. The property window will appear.
6. Select **Device Manager**. The following window will appear.



7. Right-click **YASKAWA SIGMA SERIES** and select **Update Drive Software...**

8. Select **Browse my computer for driver software**.

The following window will appear.



9. Select the **Include subfolders** check box. Click **Browse** to select the folder.

< For Windows 7 (32 bit) or Windows Vista >

"C:\Program Files\SigmaIDE\SigmaWinPlus\Driver\USB"

< For Windows 7 (64 bit) >

"C:\Program Files (x86)\SigmaIDE\SigmaWinPlus\Driver\USB\x64"

10. Click **Next**.

Installation starts by copying the necessary files. Wait until a message appears informing you that the installation is finished.

< If a Security Error Message is Displayed >

Select **Install this driver software anyway**.



11. When the installation is finished, click **Close**.

This completes the driver installation.

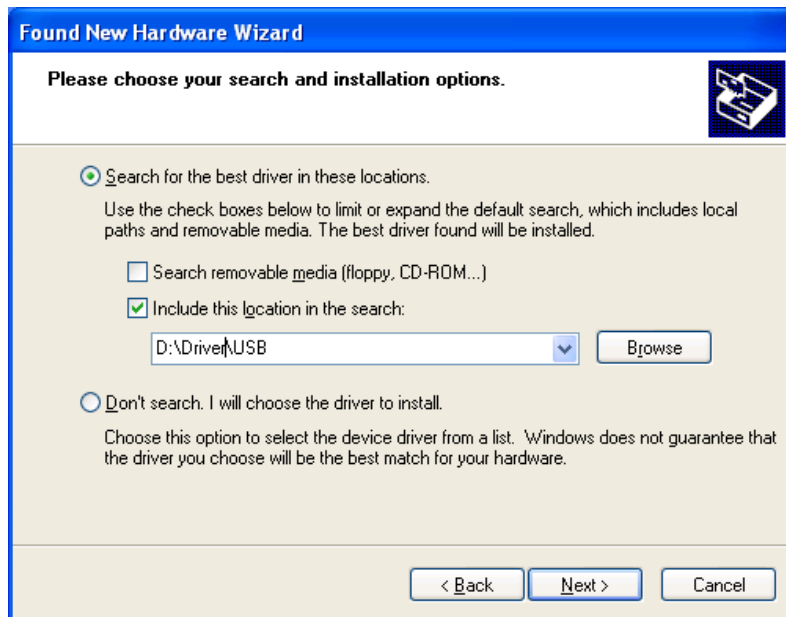
■ For Windows XP

1. Turn on the power to the PC to start Windows XP.
2. Confirm that SigmaWin+ has been installed. If it has not yet been installed, follow the procedures described in "1.4 Installing SigmaWin+ Program".
3. Connect the SERVOPACK to the PC using a USB cable, and then turn on the power to the SERVOPACK. The Found New Hardware Wizard will appear.



4. Confirm that the **Install from a list or specified location [Advanced]** option is selected, and then click **Next**.

The next Wizard will appear.



5. Select the **Search for the best driver in these locations.** option and then select the **Include this location in the search:** check box. Click **Browse** to select the folder "C:\Program Files\SigmaIDE\SigmaWinPlus\Driver\USB".
6. Click **Next**.

The Wizard starts installation by copying the necessary files. Wait until a message appears informing you that the installation is finished.

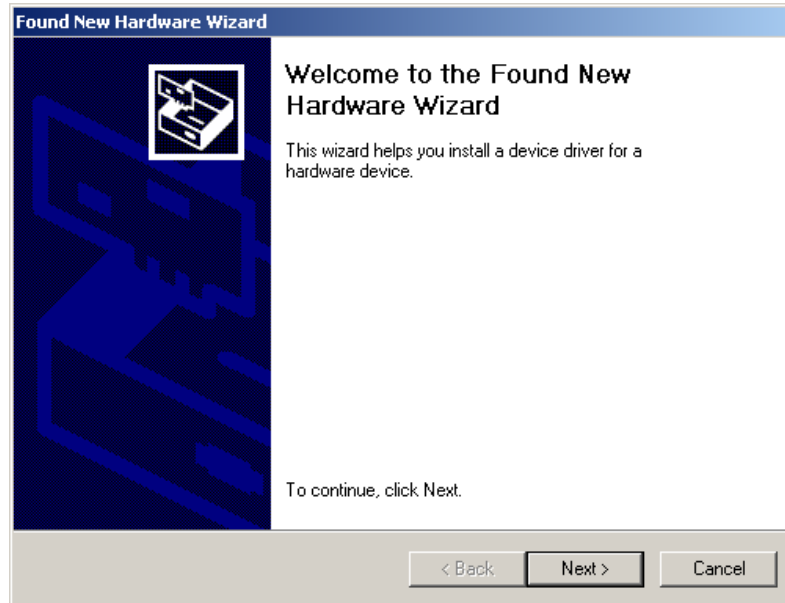


7. When the installation is finished, click **Finish**.

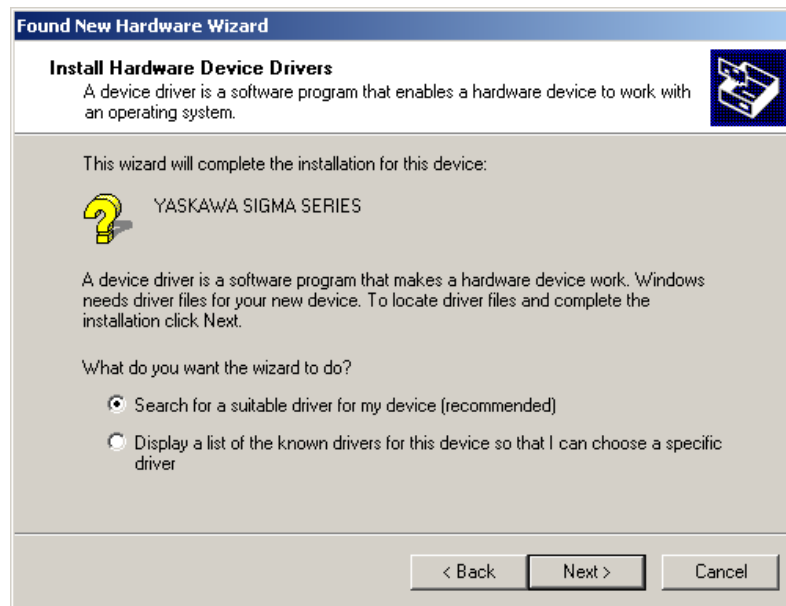
This completes the driver installation.

■ For Windows 2000

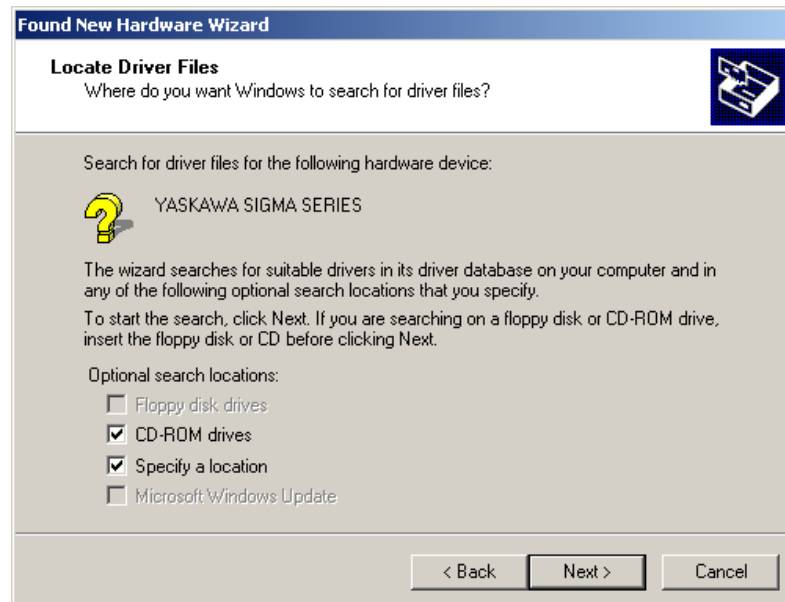
1. Turn on the power to the PC to start Windows 2000.
2. Confirm that SigmaWin+ has been installed. If it has not yet been installed, follow the procedures described in "1.4 Installing SigmaWin+ Program".
3. Connect the SERVOPACK to the PC using a USB cable, and then turn on the power to the SERVOPACK. The Found New Hardware Wizard will appear.



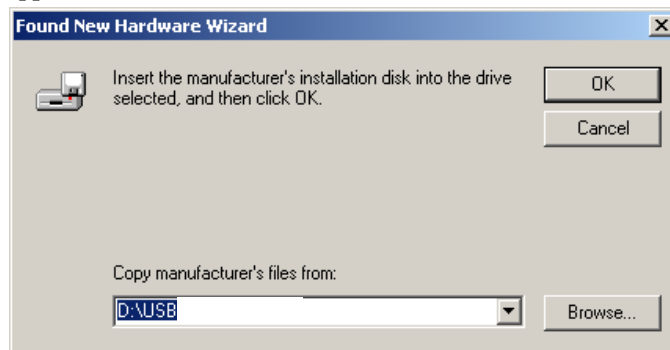
- Click **Next**. The next Wizard will appear.



- Confirm that the **Search for a suitable driver for my device [recommended]** option is selected, and then click **Next**. The next Wizard will appear.

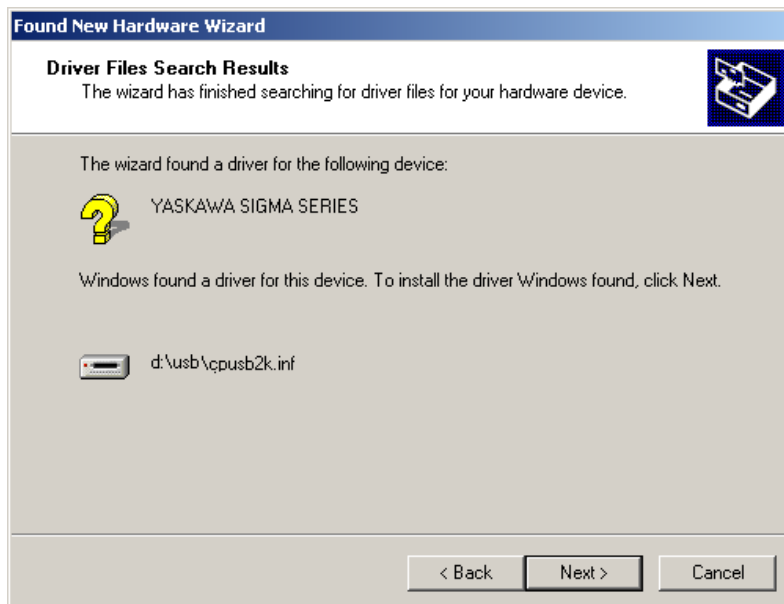


6. Select the **Specify a location** check box, and then click **Next**. The next Wizard will appear.

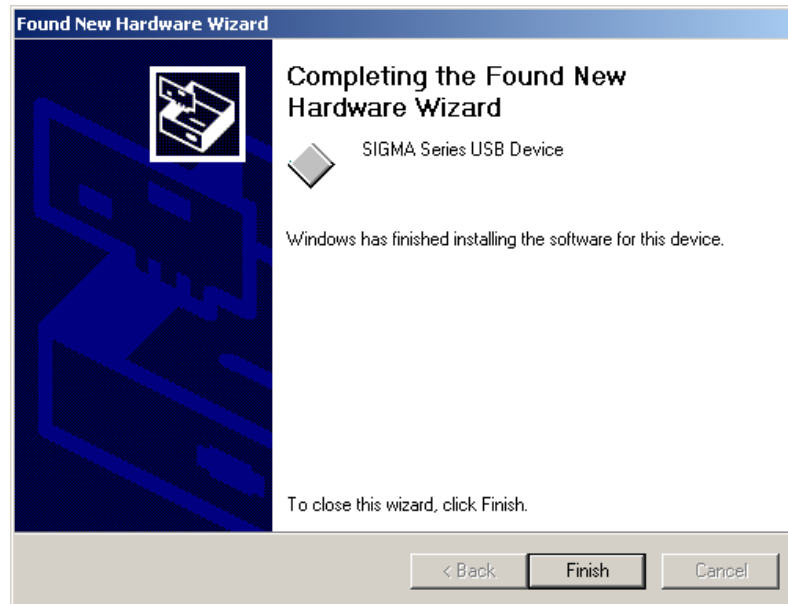


7. Click **Browse** to select "C:\Program Files\SigmaIDE\SigmaWinPlus\Driver\USB". Click **OK**.

The next Wizard will appear.



8. Confirm that "cpusb2k.inf" is displayed as the driver to be installed. Click **Next**. The Wizard starts installation by copying the necessary files. Wait until a message appears informing you that the installation is finished.



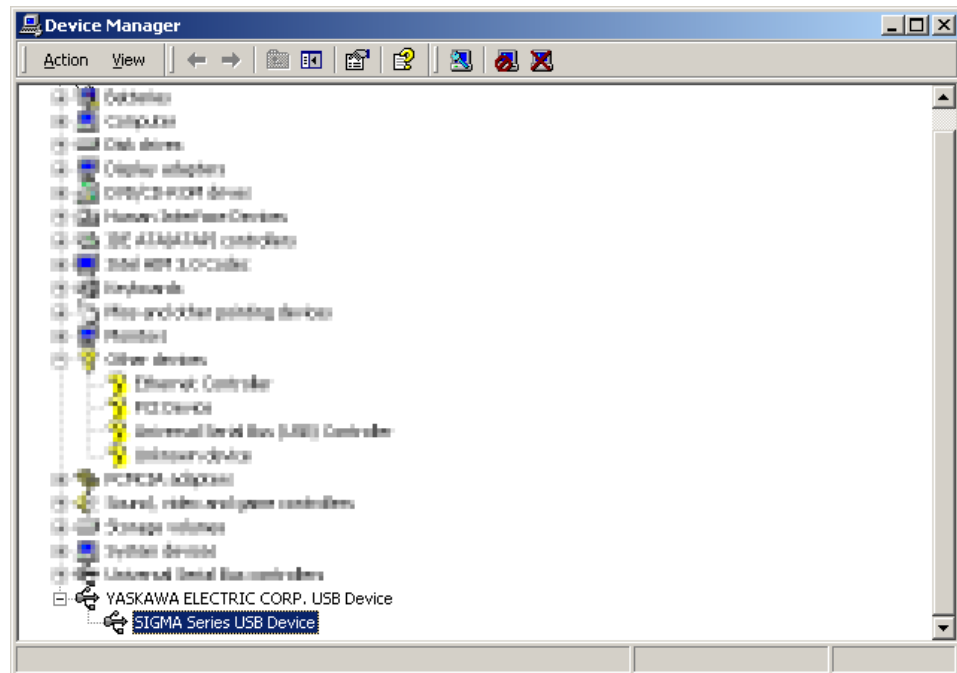
9. When the installation is finished, click **Finish**.

This completes the driver installation.

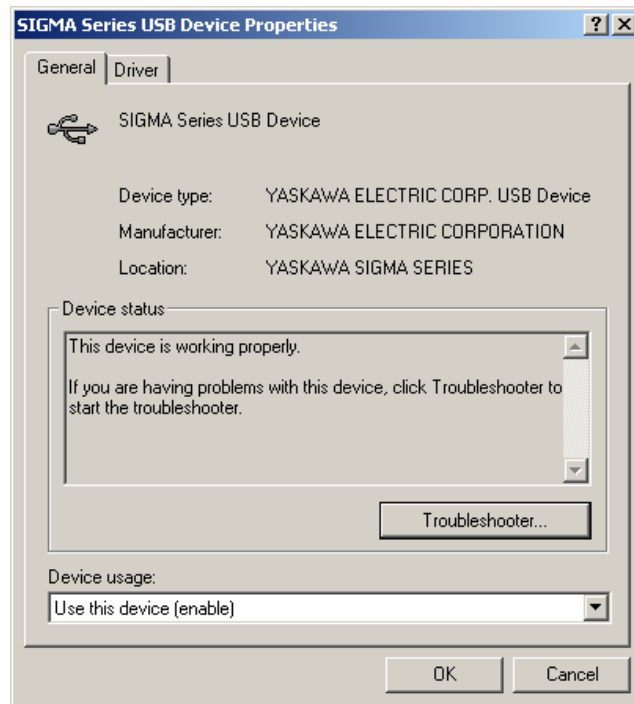
C.2 Confirming the Installation Status

Use the following procedure to make sure that the system recognizes the SERVOPACK as a USB device and that the USB driver is installed correctly.

1. Click the **Start** button, point to **Settings**, and click **Control Panel**.
2. Double-click the **System** icon. The System Properties window will appear.
3. Click the **Hardware** tab and then click **Device Manager**. The Device Manager window will appear.



4. Double-click **SIGMA Series USB Device** in the **YASKAWA ELECTRIC CORP. USB Device** folder. The SIGMA Series USB Device Properties window will appear.



5. Make sure "This device is working properly." is displayed in the **Device status** field.

When "This device is working properly." is displayed, the SERVOPACK is ready to be used through a USB connection. If it is not displayed, reinstall the USB driver.

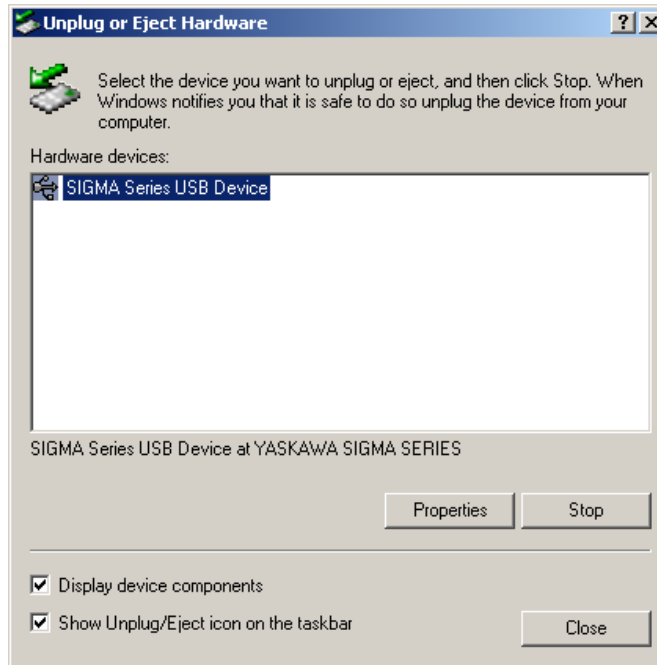
C.3 Removing a USB Device

While the power supply to the PC is on, remove the USB cable from the USB port on either the PC or the SERVOPACK. Or, turn off the power to the SERVOPACK. On the screen of Windows 2000 or XP, an external device disconnection confirmation will appear. Safely remove the device using the following procedure.

1. Double-click the **Safely Remove Hardware** icon in the taskbar in the bottom right corner.



The Unplug or Eject Hardware window will appear.



2. Select "SIGMA Series USB Device" in the **Hardware devices:** field, and then click **Stop**.



3. Confirm that the "SIGMA Series USB Device" is selected, and then click **OK**.

4. The processing to remove the selected device will be carried out and a message will appear informing you that the device can be safely removed.

The cable can then be safely removed or the power to the SERVOPACK can be safely turned off.