

Product Application Note

Steps to Add User Libraries in MotionWorks IEC Projects

Applicable Product: MotionWorks IEC

Yaskawa Electric America
2121 Norman Drive South
Waukegan, IL 60085
1-800-927-5292

| | | |
|--|--------------------------|---------------------|
| Subject: Application Note | Product: MotionWorks IEC | Doc#: AN.MCD.09.071 |
| Title: Steps To Add User Libraries in MotionWorks IEC Projects | | |

Application Overview

This document details the steps for adding user libraries like PLCopen Toolbox to MotionWorks IEC application projects

Application Highlights:

Industry: MotionWorks IEC users
Results: Importing user built libraries to other projects.

Products Used:

| Component | Product and Model Number |
|------------|--------------------------|
| Software | MotionWorks IEC |
| Controller | MP2000iec |

Application Solution and Benefits:

One of the biggest advantages of MotionWorks IEC is its ability to reuse code that was built as part of a library. This supports the modular code building philosophy that can help machine builders who make programs for similar machines. Also, basic features like jogging, safe start, and homing which are essential for almost all applications can be reused from prebuilt libraries. This document will give the user a step by step breakdown of the steps to be followed to import a user library (PLCopen Toolbox) into another project.

| | | |
|--|--------------------------|---------------------|
| Subject: Application Note | Product: MotionWorks IEC | Doc#: AN.MCD.09.071 |
| Title: Steps To Add User Libraries in MotionWorks IEC Projects | | |

Implementation Method of Core Operation

Download the latest version of the PLCopen Toolbox from www.yaskawa.com

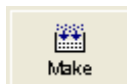
Save to this directory for default access (Can be accessed from anywhere).

C:>Documents and Settings>All Users>Shared Documents>MotionWorks IEC Express>Libraries

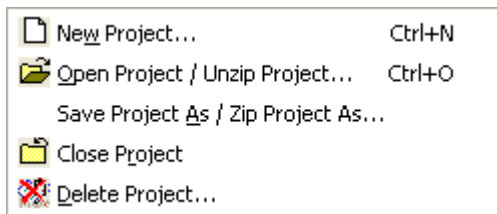
1. Close current program

2. Open or unzip the PLCopen Toolbox_xxx. If you have the Toolbox as a zwe file, you will have to unzip it. The unzipped mwe file will be inserted as a user library into the main project.

3. MAKE the project. There should be no errors

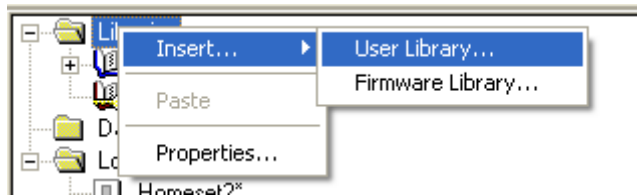


4. Without closing the PLCopen Toolbox Program, Open your program

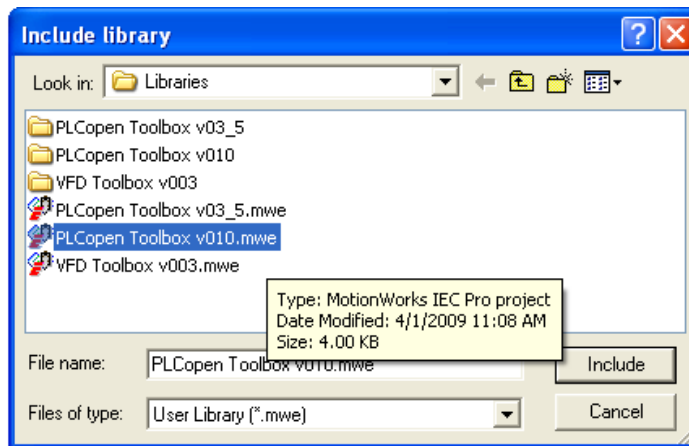


5. Right click on Libraries

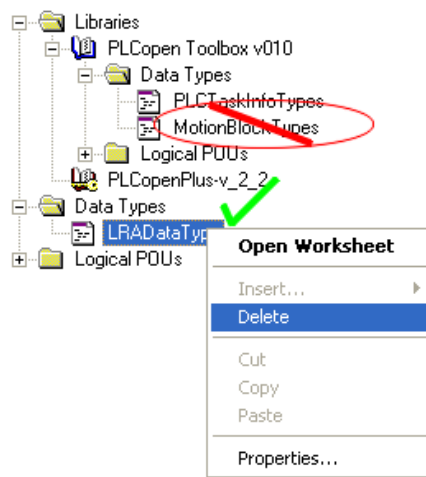
| | | |
|--|--------------------------|---------------------|
| Subject: Application Note | Product: MotionWorks IEC | Doc#: AN.MCD.09.071 |
| Title: Steps To Add User Libraries in MotionWorks IEC Projects | | |



6. Insert User Library PLCopen Toolbox_vxx.mwe.



7. Make sure to delete any Data Type folders under main tree, not under the libraries tree.



| | | |
|--|--------------------------|---------------------|
| Subject: Application Note | Product: MotionWorks IEC | Doc#: AN.MCD.09.071 |
| Title: Steps To Add User Libraries in MotionWorks IEC Projects | | |



- 8. Click the MAKE button on your Project and check for errors.
- 9. The PLCopen Toolbox library function blocks should be ready for use from the edit wizard.

