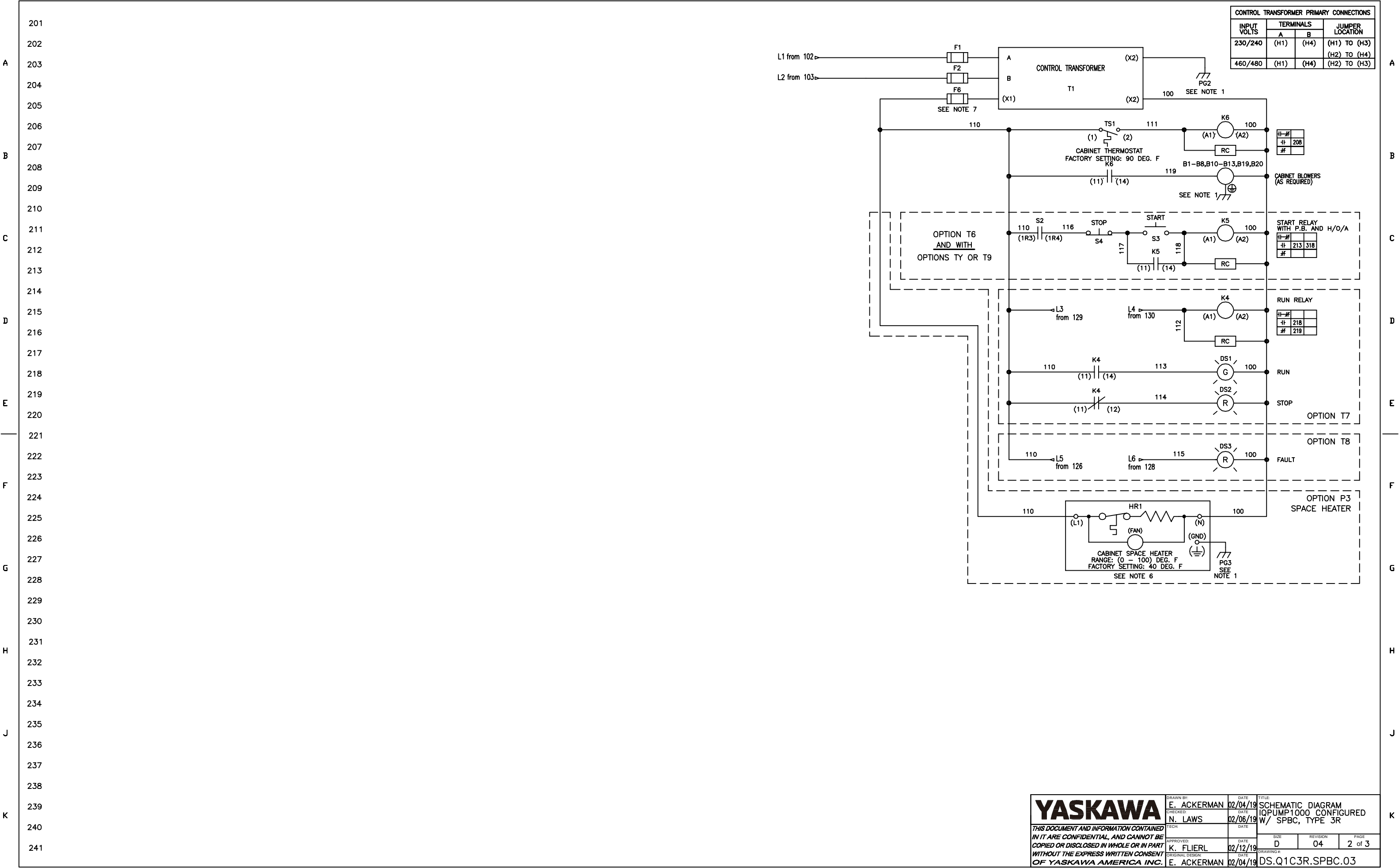


- NOTES:**
- CONNECTED TO THE CABINET. CUSTOMER TO CONNECT THE CABINET GROUND LUGS TO EARTH GROUND AND UTILITY GROUND.
 - CONDUIT FITTINGS/HUBS SHALL COMPLY WITH THE 'STANDARD FOR CONDUIT, TUBING, AND CABLE FITTINGS, UL 514B', OR CONDUIT FITTINGS HAVING THE SAME ENVIRONMENTAL RATING AS THE ENCLOSURE SHALL BE USED.
 - SEE THE TECHNICAL MANUAL FOR USE AND PROGRAMMING OF ADDITIONAL DRIVE LOGIC AND ANALOG INPUTS AND OUTPUTS.
 - BRANCH CIRCUIT PROTECTION TO BE SUPPLIED BY THE CUSTOMER WHEN NOTED ON THE CABINET DATA NAMEPLATE.
 - INSULATED TWISTED SHIELDED WIRE IS REQUIRED. SHIELD TO CONNECT TO PROPER TERMINALS AS SHOWN. CONNECT THE SHIELD ONLY AT THIS END. STUB AND ISOLATE THE OTHER END. DO NOT RUN THESE WIRES IN THE SAME CONDUIT AS THE AC POWER AND AC CONTROL WIRES. KEEP ALL WIRING UNDER 50m IN LENGTH.
 - CUSTOMER TO ADJUST THE THERMOSTAT ON THE SPACE HEATER HR1 FOR MINIMUM DESIRED TEMPERATURE INSIDE THE DRIVE CABINET. THIS SET TEMPERATURE IS NORMALLY SELECTED TO BE SLIGHTLY HIGHER THAN THE MINIMUM AMBIENT TEMPERATURE OF THE AIR SURROUNDING THE CABINET, AND IS THE TEMPERATURE AT WHICH THE SPACE HEATER HR1 WILL SHUT OFF.
 - FOR A CONTROL TRANSFORMER T1 POWER RATING OF 350VA OR GREATER, SECONDARY FUSE F8 IS ADDED.
 - IF AC MOTOR IS FURNISHED WITH A N.C. THERMAL SWITCH THEN SET DRIVE PARAMETER H1-07 TO 27. THIS WILL CAUSE THE DRIVE TO COAST TO STOP UPON AN AC MOTOR THERMAL FAULT. ALONG WITH THIS, ADD THE FOLLOWING CUSTOMER WIRING: WIRE THE N.C. THERMAL SWITCH BETWEEN TERMINALS TB1:7 AND TB1:8.
 - OPTIONS TD, TG, TH, OR TQ CONTROL (SEE UDE0057 FOR MORE INFORMATION)
 - CUSTOMER TO REPLACE THE JUMPER WITH NORMALLY CLOSED SAFETY INTERLOCKS, IF APPLICABLE.
- * - INDICATES COMPONENTS NOT SUPPLIED BY YASKAWA.
 --- INDICATES CUSTOMER WIRING.
 SEE DRAWING UDE00556 FOR CUSTOMER CONNECTION TABLES.
 SEE DRAWING UDE00557 FOR DRIVE PARAMETER SETTINGS.

REVISIONS				
REV.	DESCRIPTION	ECO #	DRAWN BY	DATE
04	ADDED +2 AND JUMPER NOTE	13769	SEK	04/15/24
03	CHANGE: JUMPER(A21),TB1(5,10)/OPT. T7 WIRING	10606	EAA	06/09/20
02	CHANGED OPT. PZ DETAIL & WIRE NO. TO SN	9636	EAA	06/05/19

YASKAWA	DRAWN BY: E. ACKERMAN	DATE: 02/04/19	TITLE: SCHEMATIC DIAGRAM
	CHECKED: N. LAWS	DATE: 02/06/19	IQPUMP1000 CONFIGURED W/ SPBC, TYPE 3R
APPROVED: K. FLIERL	DATE: 02/12/19	SIZE: D	REVISION: 04
ORIGINAL DESIGNER: E. ACKERMAN	DATE: 02/04/19	DRAWING #: DS.Q1C3R.SPBC.03	PAGE: 1 of 3



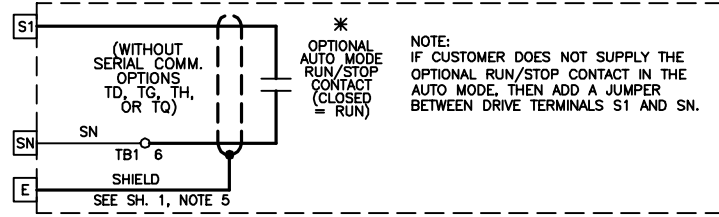
INPUT VOLTS	TERMINALS		JUMPER LOCATION
	A	B	
230/240	(H1)	(H4)	(H1) TO (H3) (H2) TO (H4)
460/480	(H1)	(H4)	(H2) TO (H3)

201
202
203
204
205
206
207
208
209
210
211
212
213
214
215
216
217
218
219
220
221
222
223
224
225
226
227
228
229
230
231
232
233
234
235
236
237
238
239
240
241

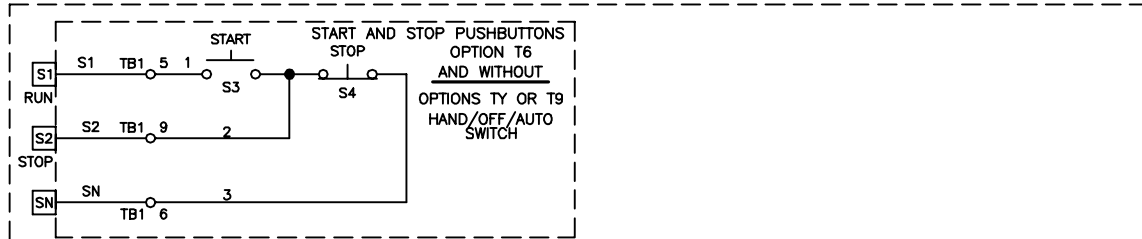
A
B
C
D
E
F
G
H
J
K

YASKAWA	DRAWN BY: E. ACKERMAN	DATE: 02/04/19	TITLE: SCHEMATIC DIAGRAM
	CHECKED: N. LAWS	DATE: 02/06/19	IQPUMP1000 CONFIGURED W/ SPBC, TYPE 3R
THIS DOCUMENT AND INFORMATION CONTAINED IN IT ARE CONFIDENTIAL, AND CANNOT BE COPIED OR DISCLOSED IN WHOLE OR IN PART WITHOUT THE EXPRESS WRITTEN CONSENT OF YASKAWA AMERICA INC.	APPROVED: K. FLIERL	DATE: 02/12/19	SIZE: D
	ORIGINAL DESIGN: E. ACKERMAN	DATE: 02/04/19	REVISION: 04
			PAGE: 2 of 3
			DRAWING #: DS.Q1C3R.SPBC.03

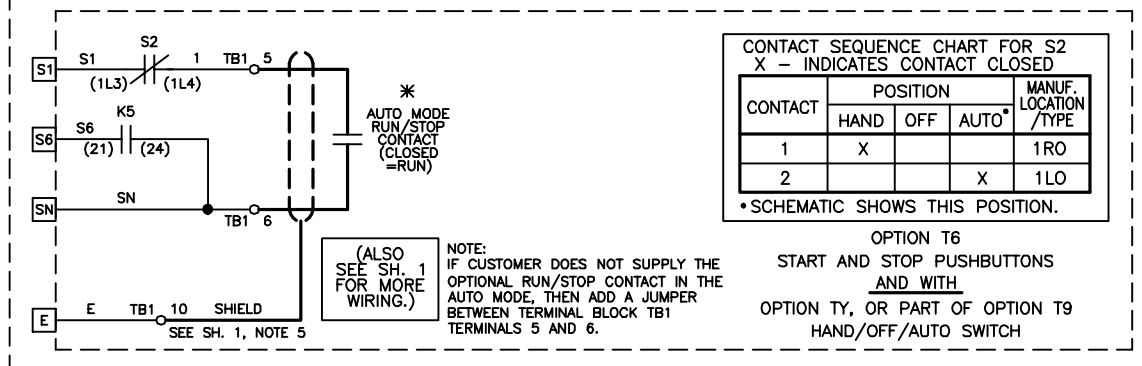
RUN/STOP CONTROL (FROM SHEET 1)



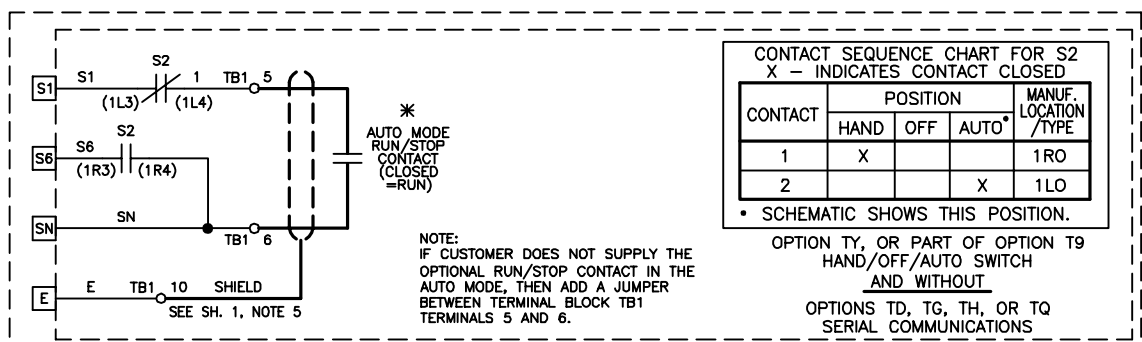
OR



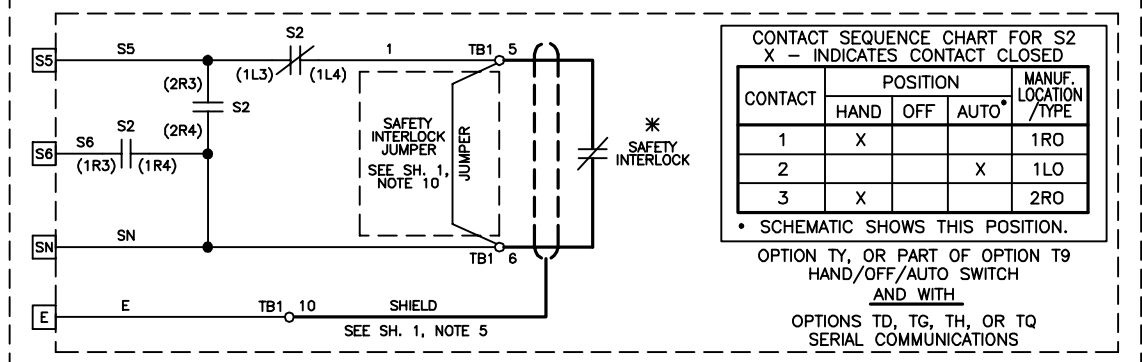
OR



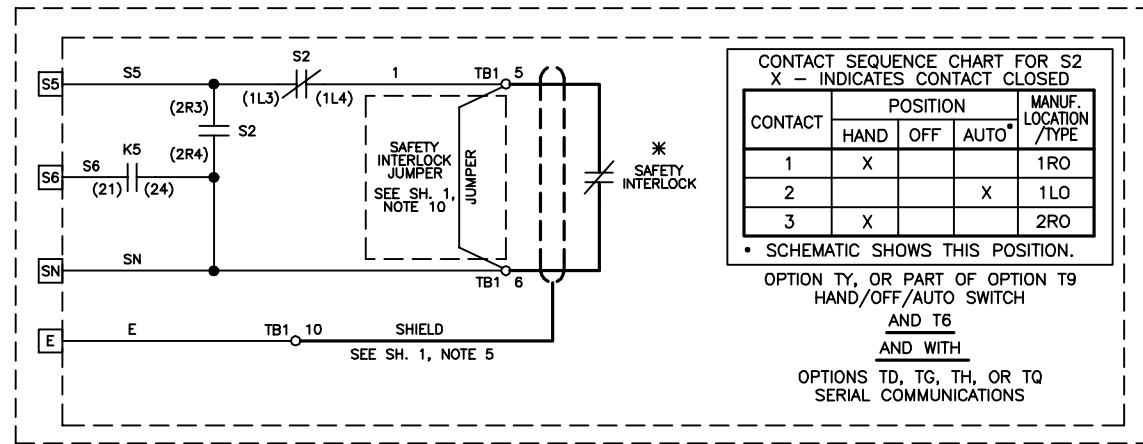
OR



OR



OR



YASKAWA

THIS DOCUMENT AND INFORMATION CONTAINED IN IT ARE CONFIDENTIAL, AND CANNOT BE COPIED OR DISCLOSED IN WHOLE OR IN PART WITHOUT THE EXPRESS WRITTEN CONSENT OF YASKAWA AMERICA INC.

DRAWN BY: E. ACKERMAN	DATE: 02/04/19	TITLE: SCHEMATIC DIAGRAM IQPUMP1000 CONFIGURED W/ SPBC, TYPE 3R
CHECKED BY: N. LAWS	DATE: 02/06/19	
APPROVED BY: K. FLIERL	DATE: 02/12/19	SIZE: D
ORIGINAL DESIGNER: E. ACKERMAN	DATE: 02/04/19	REVISION: 04
		PAGE: 3 of 3

DRAWING #: DS.Q1C3R.SPBC.03