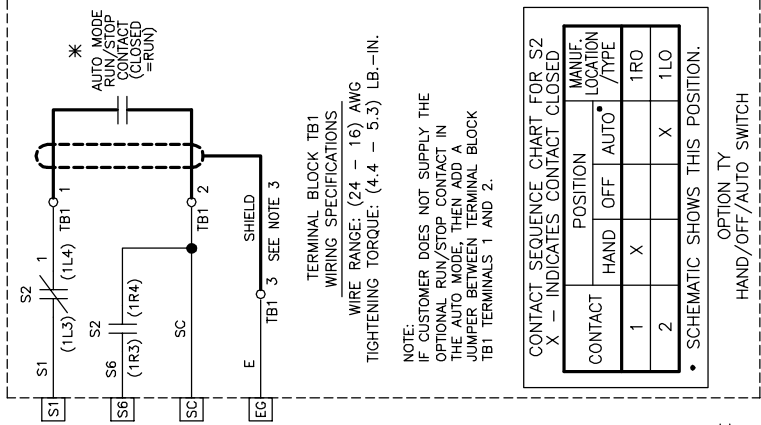


CONTROL TRANSFORMER PRIMARY CONNECTIONS

INPUT VOLTS	TERMINALS	JUMPER LOCATION
230/240	(H1)	(H1) TO (H3)
460/480	(H1)	(H2) TO (H4)

CONTROL TRANSFORMER, CABINET THERMOSTAT AND CABINET FAN (AS REQUIRED)



CONTACT SEQUENCE CHART FOR S2

CONTACT	POSITION	MANUF. LOCATION /TYPE
1	HAND	X
2	OFF	X
	AUTO	1R0
	1LO	X

OPTION TY: HAND/OFF/AUTO SWITCH

NOTES:

- CONNECTED TO THE CABINET. CUSTOMER TO CONNECT THE CABINET GROUND LUGS TO EARTH GROUND AND UTILITY GROUND.
- CONDUIT FITTINGS/HUBS SHALL COMPLY WITH THE 'STANDARD FOR CONDUIT, TUBING, AND CABLE FITTINGS, UL 514B' OR CONDUIT FITTINGS HAVING THE SAME ENVIRONMENTAL RATING AS THE ENCLOSURE SHALL BE USED.
- INSULATED TWISTED SHIELDED WIRE IS REQUIRED. SHIELD TO CONNECT TO PROPER TERMINALS AS SHOWN. CONNECT THE SHIELD ONLY AT THIS END. STUB AND ISOLATE THE OTHER END. DO NOT RUN THESE WIRES IN THE SAME CONDUIT AS THE AC POWER AND AC CONTROL WIRES. KEEP ALL WIRING UNDER 50m (164 FEET) IN LENGTH.
- REMOVE THE H1 TO HC JUMPER WHEN USING THE SAFE DISABLE INPUT. THE WIRE LENGTH SHOULD NOT EXCEED 30m (98 FEET).

SEE DRAWING UDE00465 FOR CUSTOMER CONNECTION TABLES.
SEE DRAWING UDE00466 FOR DRIVE PARAMETER SETTINGS.

REVISIONS

REV.	DESCRIPTION	ECD #	DRAWN BY	DATE
00	INITIAL RELEASE	-	DRC	11/4/14



THIS DOCUMENT AND INFORMATION CONTAINED HEREIN ARE CONFIDENTIAL AND CANNOT BE COPIED OR DISCLOSED IN WHOLE OR IN PART WITHOUT THE EXPRESS WRITTEN CONSENT OF YASKAWA AMERICA, INC.

DATE	BY	REVISION	DESCRIPTION
11/4/14	D.R. CMELAK	00	SCHEMATIC DIAGRAM
11/4/14	D. PACKER	00	iQPUMP/MICRO TYPE 3R CONFIGURED
11/4/14	K. FLIERL	00	DRAWING #
11/4/14	D.R. CMELAK	00	SIZE
11/4/14	D.R. CMELAK	00	PAGE
11/4/14	D.R. CMELAK	00	1 of 1