

Upgrade Information of MPE720 Version 6.05

1. Added and Improved Functions

1.1 Ver.6.05 Upgrade Information

Items added and features improved from MPE720 Ver.6.04 to Ver.6.05 are as follows.

No.	Feature	Classification
1	SGDV Servo Amplifier selection added to Module Configuration	Add function
2	Motion parameter addition	Add function
3	MNET-01 Module addition	Add function
4	Elimination of "Phase Reference" command for MP2400	Add function
5	Communication Port for MPE720 Lite	Add function
6	Parameter "Pn000" for "SJDE-**AN**"	Add function
7	Group definition of sequence program	Improvement
8	Prohibit duplicated register assignment in the User Structure	Improvement
9	Test Run function for Inverter	Improvement
10	Program can be named in the program properties	Improvement
11	Modification of display for CNTR-01 module	Improvement
12	Eliminate the Error Dialog "CpPnlStatus Error"	Preventive
13	Detail display in the Servopack parameter screen	Preventive
14	Modification for 218IFA module definition with the non-protocol	Preventive
15	Modification of C-language property	Preventive
16	Modification of Motion Assist function (ASCII)	Preventive
17	Compare function for user structure	Preventive

1.2 Past Upgrade Information

No.	Upgrade information	Remarks
1	MPE720 version 6.02 upgrade information	ver.6.01 -> ver.6.02
2	MPE720 version 6.03 upgrade information	ver.6.02 -> ver.6.03
3	MPE720 version 6.04 upgrade information	ver.6.03 -> ver.6.04

2. Description

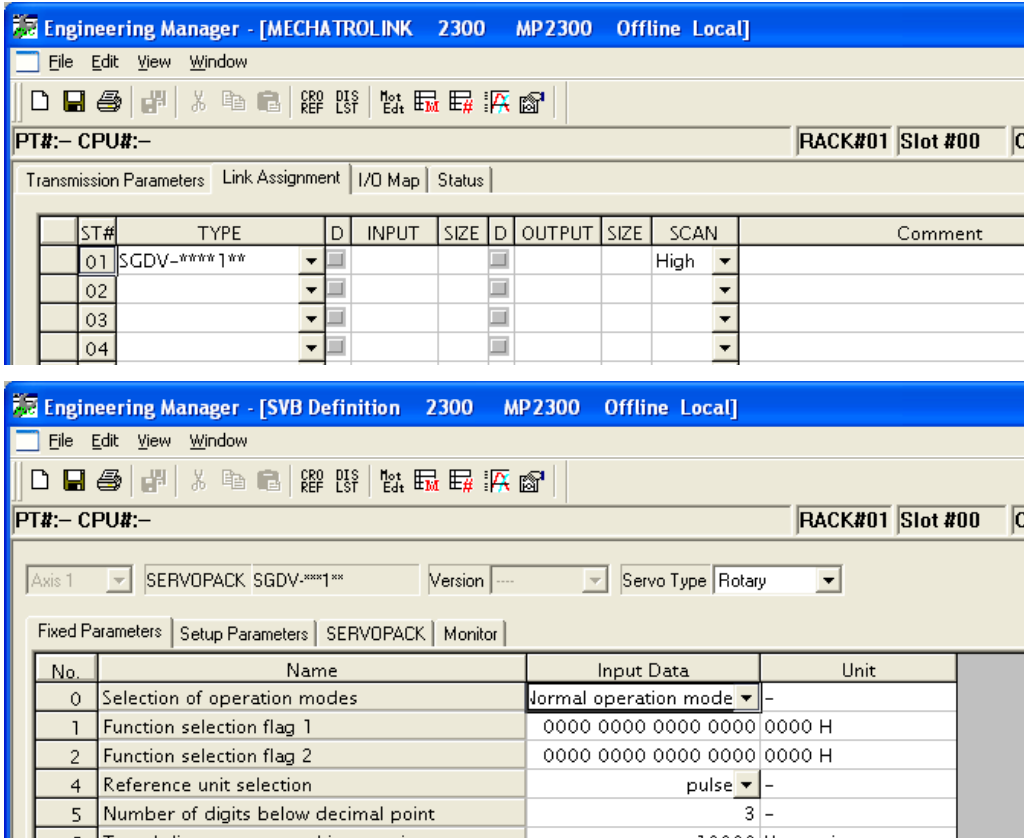
No.1 SGD Servo Amplifier Selection Added to Module Configuration

"SGDV-****1**" was added as a new servo amplifier for SVB module.

<Controller Version>

Supported Version (Built-in SVB) : MP2000 system software Ver.2.61 or later.

Supported Version (Option SVB) : SVB-01 system software Ver.1.22 or later.



No.2 Motion Parameter Addition

The following motion parameters were added for SGD servo amplifier on the SVB module.

"Latch completion status clear request (OWxx00)", "Latch mode selection (OWxx01)", "Latch completion sequence number (IWxx44)" and "Number of continuous latch sequence completion cycles (IWxx45)" were added in "Continuous latch".

"Servo driver stop signal input (ILxx02)" and "Stop signal input(HWBB) (IWxx2E)" were added in "Hard wired base block".

Module	Parameter (Comment)	Variable Name
Setting Parameter	OWxx00 (bit13) Latch completion status clear request	ClearStatus
	OWxx01 (bit6) Latch mode selection	ModeSelection
Monitor Parameter	ILxx02 (bit10) Servo driver stop signal input	StopSignalInput
	IWxx2E (bit10) Stop signal input(HWBB)	StopSignalInput
	IWxx44 Latch completion sequence number	CompletionSequenceNumber
	IWxx45 Number of continuous latch sequence completion cycles	CountinuousCycleCount

No.3 MNET-01 Module Addition

The MNET-01 module was added.

The MNET-01 module has 217IF function and MNET function.

<Controller Version>

Supported Version: MP2000 system software Ver.2.61 or later.

The screenshot shows the 'Engineering Manager' software interface. The title bar indicates the project is '2300 MP2300 Offline Local'. The main window displays the configuration for a controller. Below the controller configuration, there is a section for 'Module Details MNET-01 SLOT#01'.

Controller Configuration Table:

Slot Number	00	01	02	03
Module Type	MP2300	MNET-01	UNDEFINED	UNDEFINED
Controller Number	-	-	-	-
Circuit Number	-	-	-	-
I/O Start Register	----	----	----	----
I/O End Register	----	----	----	----
Disable Input	▼	▼	▼	▼
Disable Output	▼	▼	▼	▼

MNET-01 : This module has RS232C/MNET Transfer Function.

Module Details MNET-01 SLOT#01 Table:

Slot Number	1	2
I/O End Register	----	0421
Disable Input	▼	Enable
Disable Output	▼	Enable
Motion Start Register	----	----
Motion End Register	----	----
Details		
Status		

217IF: RS232

No.4 "Phase Reference" Command Invalidation for MP2400

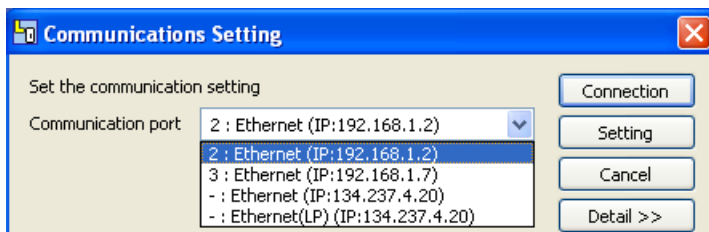
"Phase Reference" command was eliminated from the motion command for MP2400. It is invalid and displayed "Reserved".

Nn	Name	REG	Input Data	Unit
0	Run command setting	0W8000	0000 0000 0000 0000	0000 H
1	Mode setting 1	0W8001	0000 0000 0000 0000	0000 H
2	Mode setting 2	0W8002	0000 0000 0000 0000	0000 H
3	Function setting 1	0W8003	0000 0000 0001 0001	0011 H
4	Function setting 2	0W8004	0000 0000 0011 0011	0033 H
5	Function setting 3	0W8005	0000 0000 0000 0000	0000 H
6	Option Setting	0W8006	0000 0000 0000 0000	0000 H
8	Motion command	0W8008	No Command	-
9	Motion command control flag	0W8009	AbsoluteEncoderReset	0000 H
10	Motion subcommand	0W800A	Speed Reference	-
12	Torque/Thrust reference setting	0L800C	Torque/Thrust Reference	%
14	Speed limit setting at the torque/thrust reference	0W800E	Phase Reference	%
16	Speed reference setting	0L8010	Change position loop integ	%
20	Positive side limiting torque/thrust setting at the speed refer	0L8014	Stored Parameter Write	10 ⁿ referenc

Nn	Name	REG	Input Data	Unit
0	Run command setting	0W8000	0000 0000 0000 0000	0000 H
1	Mode setting 1	0W8001	0000 0000 0000 0000	0000 H
2	Mode setting 2	0W8002	0000 0000 0000 0000	0000 H
3	Function setting 1	0W8003	0000 0000 0001 0001	0011 H
4	Function setting 2	0W8004	0000 0000 0011 0011	0033 H
5	Function setting 3	0W8005	0000 0000 0000 0000	0000 H
6	Option Setting	0W8006	0000 0000 0000 0000	0000 H
8	Motion command	0W8008	No Command	-
9	Motion command control flag	0W8009	AbsoluteEncoderReset	0000 H
10	Motion subcommand	0W800A	Speed Reference	-
12	Torque/Thrust reference setting	0L800C	Torque/Thrust Reference	%
14	Speed limit setting at the torque/thrust reference	0W800E	Reserved	%
16	Speed reference setting	0L8010	Change position loop integ	%
20	Positive side limiting torque/thrust setting at the speed refer	0L8014	Stored Parameter Write	10 ⁿ referenc

No.5 Communication Port for MPE720 Lite

In MPE720 Lite, "Ethernet" and "Ethernet(LP)" are available as a communication option, and other communication ports can not be selected.



No.6 Parameter "Pn000" for "SJDE-**AN**"

The user constant was added by support to "MECHATROLINK interface version JUNMA series servo amplifier" of MP2000 series SVB module (built-in CPU, option).

The parameter "Pn000" for "SJDE-**AN**" was added.

Engineering Manager - [SVB Definition 2300 MP2300 Offline Local]

PT#:- CPU#:- RACK#01 Slot #00

Axis 1 | SERVOPACK SJDE-**AN** | Version --- | Servo Type Rotary

Fixed Parameters | Setup Parameters | **SERVOPACK** | Monitor

No.	Name	Input Data	Unit	Curr
0000	Basic Function Select Switch 0	0010 H -		
000A	Filter Setting	0000 H -		
020E	Electronic Gear Ratio [Numerator]	1 -		
0210	Electronic Gear Ratio [Denominator]	1 -		
0304	JOG Speed	500 min-1		
050A	Input Signal Selections 1	2881 H -		
050B	Input Signal Selections 2	8883 H -		
0515	Input Signal Selection 5	8488 H -		

Detail

Basic Function Select Switch 0

Digit 0 Direction Selection Set CCW as forward direction.

Digit 1 -

Digit 2 -

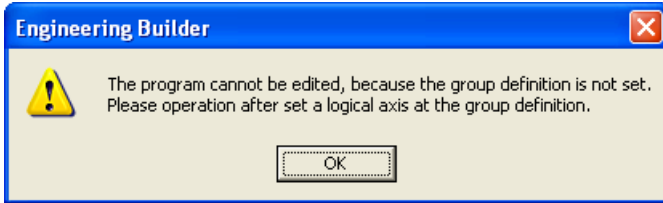
Digit 3 -

OK Cancel

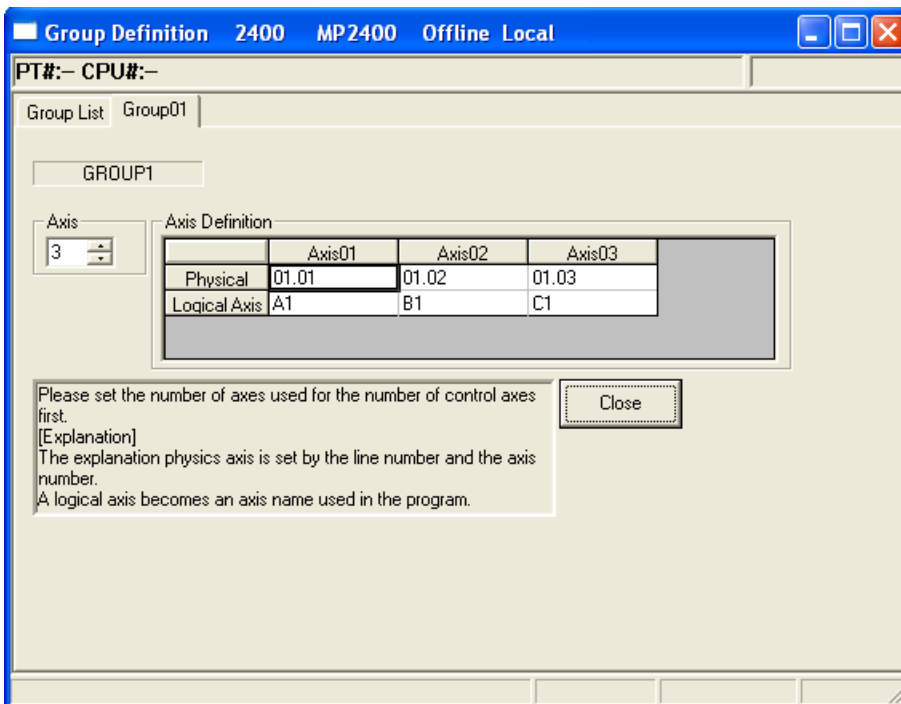
No.7 Group Definition of Sequence Program

The following message dialog box appears to encourage group definition setup if Motion Command Assist dialog is operated in a sequence program.

(Message)

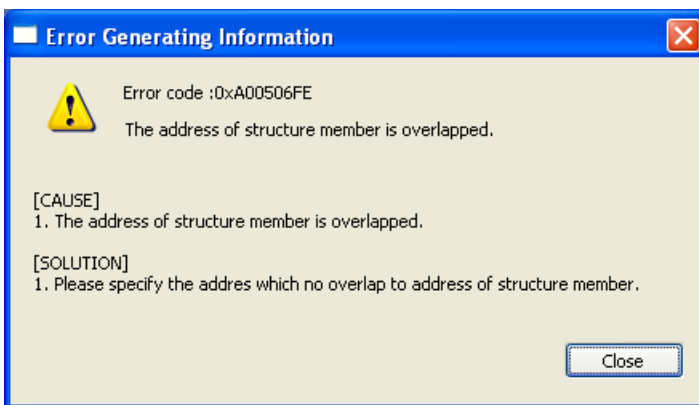
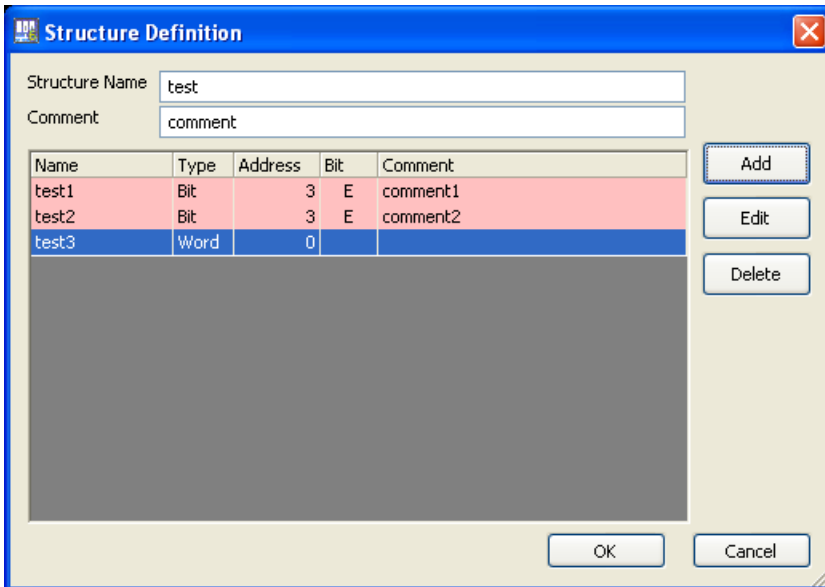


(Group Definition)



No.8 Prohibit Duplicated Register Assignment in the User Structure

When there are members that have same data type, address, and bit address in a User Structure, they appear pink. The structure cannot be registered and an error dialog appears.



No.9 Test Run Function for Inverter

When the jog was stopped at the test run of the inverter, monitoring "Output frequency (IWxx11)" was completely changed to "0".

No.10 Program Can Be Renamed In The Program Properties

"Rename" menu was added to the properties of the ladder program, motion program and sequence program. Program name can be changed in the properties of each program.

No.11 Modification of Display for CNTR-01 Module

The displayed size of CNTR-01 module definition screen was improved to be appropriate to avoid hiding the setting area even if task manager or watch screen is displayed.

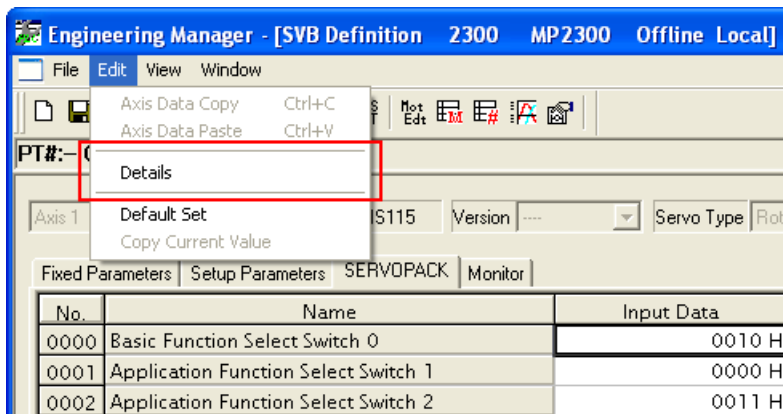
No.12 Eliminate the Error Dialog "CpPnlStatus Error"

The error dialog "CpPnlStatus Error" will no longer appear. It appeared when a communication was disconnected.



No.13 Detailed Display in the Servopack Parameter Screen

The "Details" in the Edit Menu is available for parameters that have detailed information.



No.14 Modification for 218IFA module definition with the non-protocol

In previous versions, when the protocol setting was changed from the 'Extended MEMOBUS' to "None" in the 218IFA details definition screen, the automatic reception setting (which must be disabled) was enabled.

In 6.05, 'Automatic Receive' setting is changed to "Disabled" when the protocol setting of connection parameter No.1 is changed to "None".

If the protocol setting of connection parameter No.1 is changed to something except "None", 'Automatic Receive' setting is changed to "Enabled" as the default.

No.15 Modification of C-language Property

In the C language properties, the function for "Enable / Disable" selection of "Automatic task wake-up setting" was not set properly.

In 6.05, it is modified to function properly.

No.16 Modification of Motion Assist Function (ASCII)

A typo was modified.

"ASCII" in the Motion Command Assist function was displayed "ACSII".

No.17 Compare function for User Structure

A "compare error" in the compare function can now detect properly even if one project has a user structure and the other does not.

In previous versions, compare errors were detected.