

Product Application Note

Yaskawa CamTool Installation Procedure

Applicable Product: Yaskawa CamTool with MotionWorksIEC

Yaskawa Electric America
2121 Norman Drive South
Waukegan, IL 60085
1-800-927-5292

Subject: Application Note	Product: CamTool	Doc#: SW.MCD.09.052
Title: Yaskawa CamTool Installation Procedure		

Application Overview

This document details the installation procedure of Yaskawa CamTool software for use with MotionWorksIEC and MP2300Siec. Yaskawa’s CamTool is the recommended tool for users to generate cam profiles for their applications. This installation is only for users who do not have Yaskawa Cam Tool version 4.61 on their PCs

Application Highlights:

Industry: Applications that require camming

Products Used:

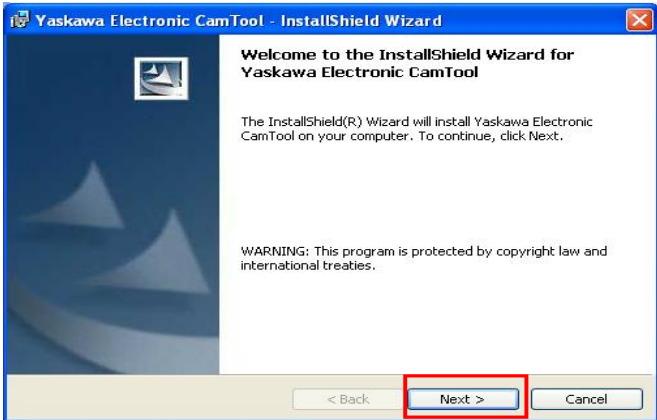
Component	Product and Model Number
Software	Yaskawa CamTool Installer

Installation Steps

1. Obtain the setup folder for installing the Cam Tool. The folder is ‘setup.zip’.
2. Make sure no other applications are running on the PC
3. Double click on ‘setup.exe’ in the zipped file. The installer begins the installation process

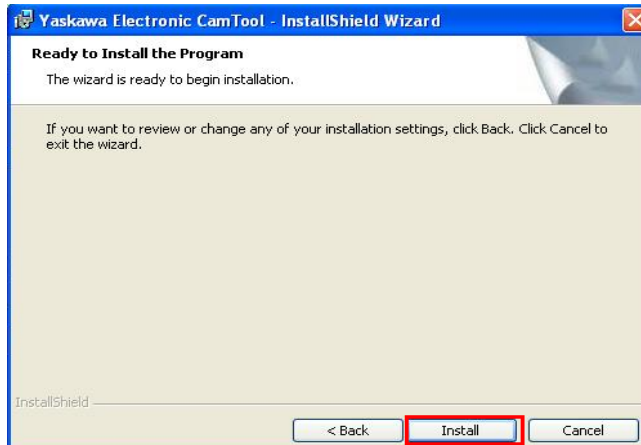
Name	Modified	Size	Ratio	Packed	Path
setup.exe	3/17/2009 4:13 PM	8,543,882	4%	8,214,560	

4. Continue installation

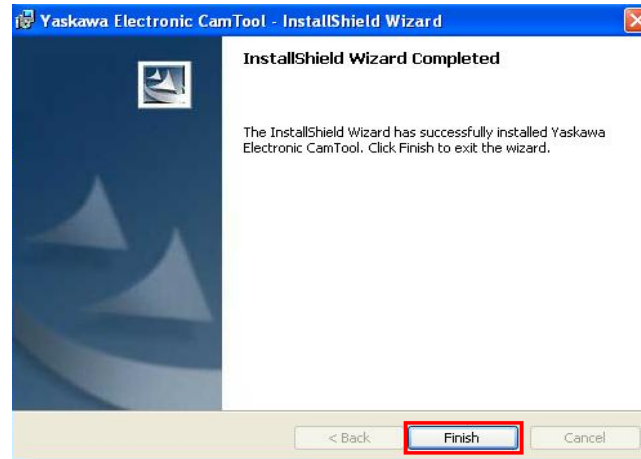


Subject: Application Note	Product: CamTool	Doc#: SW.MCD.09.052
Title: Yaskawa CamTool Installation Procedure		

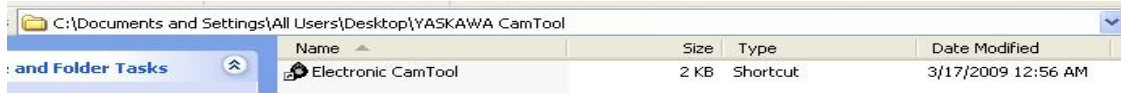
5. Install the program



6. Finish installation



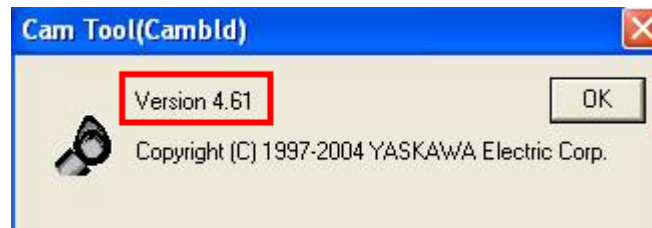
7. The CamTool is installed in a folder called YASKAWA CamTool on the desktop. In the folder is the CamTool program.



Subject: Application Note	Product: CamTool	Doc#: SW.MCD.09.052
Title: Yaskawa CamTool Installation Procedure		

Validation steps

1. Check the version of CamTool installed. Open CamTool. Under Help, click on 'About Apps'



2. If user has SigmaWin+ installed on the PC, make sure SigmaWin functions properly after CamTool installation. Specifically ensure that the drivers necessary for SigmaWin+ are not affected by CamTool installation.